

HOME & DESIGN A TIMES OF INDIA PUBLICATION

TRENDS

VOLUME 9 NO 4

**CONTRARY TO
CONVENTIONAL
DESIGN,
AND EACH OTHER**

ANAND MENON &
SHOBHAN KOTHARI

ALSO
FEATURING
Giulio Damilano
Armut Wurster
Prhuti Malani
Shivraj Patel
and more...



SCULPTED SPACES | *Commercial*

ONE BY TWO

*A fashion studio and
accounting office occupy
equal place of pride in this
Ahmedabad project by
Intrinsic Designs*

Text TINA THAKRAR
Images ISHITA SITWALA

SCULPTED SPACES *Commercial*



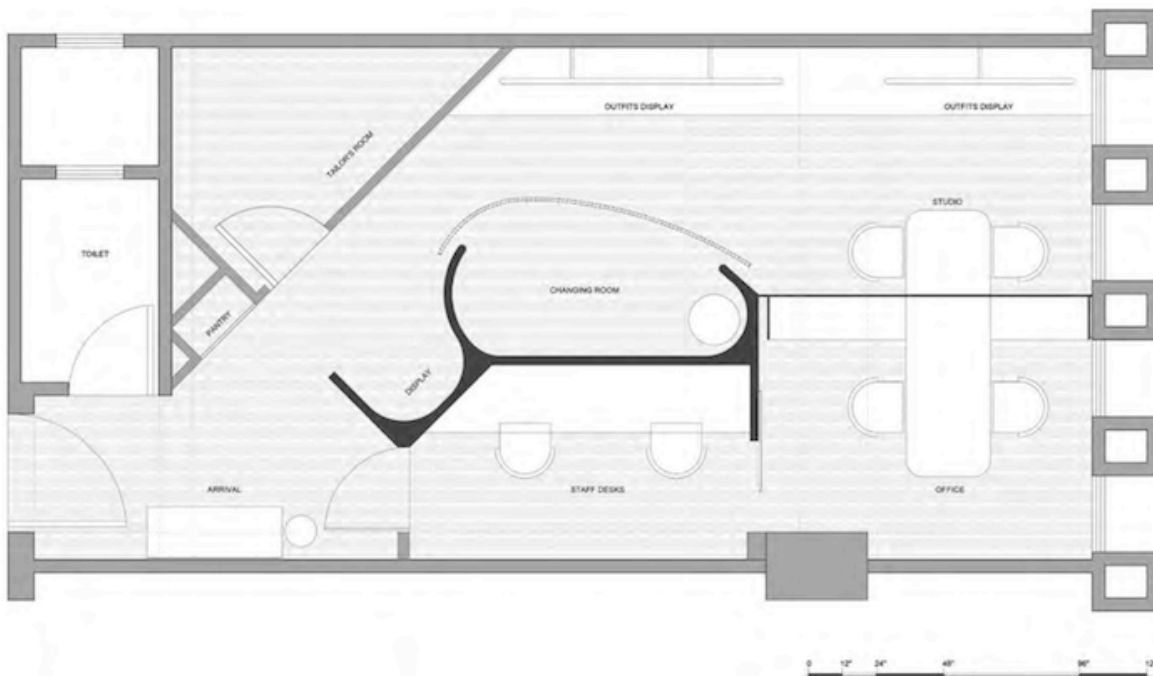
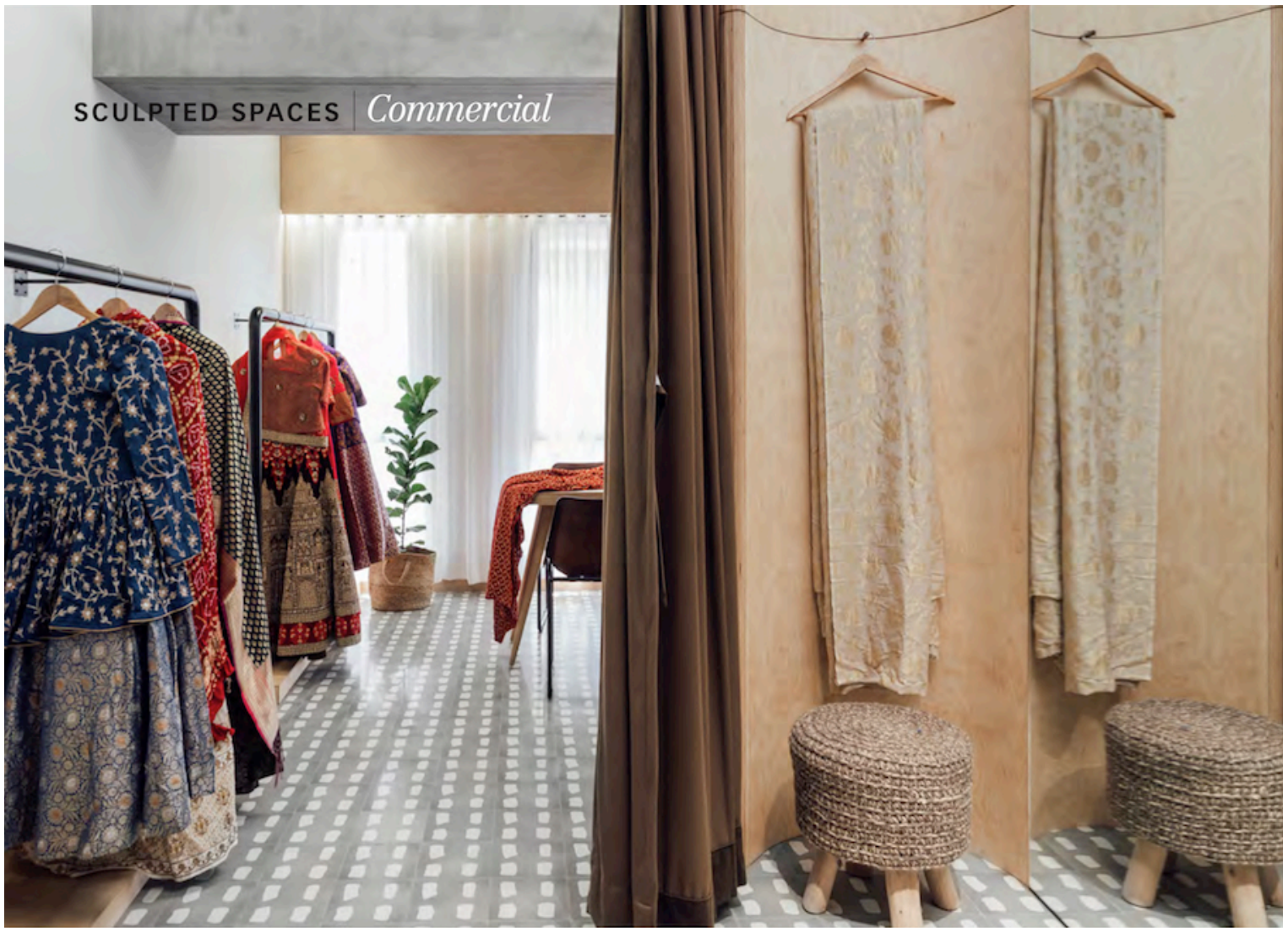
Designed for a young couple, one a fashion designer and the other a chartered accountant, the space allows their individual identities to be at the forefront, followed closely by function and utility.



“This project is a search for lightness and efficiency in design, uncompromising on the values of stripping away the inessential, and arriving at the truth of materials and forms.”

– Shivraj Patel, Co-founder & Principal Designer, Intrinsic Designs





Since the space combines an office and a studio, the industrial had to meet the creative through design. What works for the space though, is that the colourful fashion garments receive the perfect clutterless backdrop, and the office receives its fair share of informality.



“Pursuing a fluid yet formal design language, fabricated elliptical curves and gently curved edges are carved out to enhance the narrow space, and allow for maximum possible utility.”

– Shruti Malani, Co-founder & Principal Designer, Intrinsic Designs

HOME & DESIGN

TRENDS